

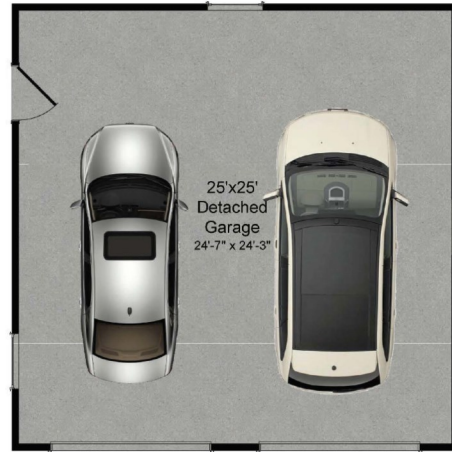


GLENIX HOMES

THE ASPEN

The Aspen offers a wide open floor plan with spacious rooms and lots of natural light as well as flexible spaces, allowing you to live the way you want. With an optional morning room and main level bed and bath, this home can adjust to almost any need.

GARAGE
OPTIONS

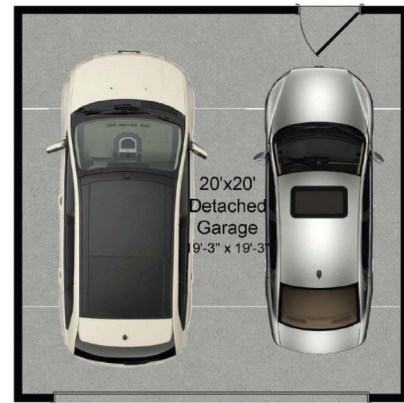


25 X 25 Garage

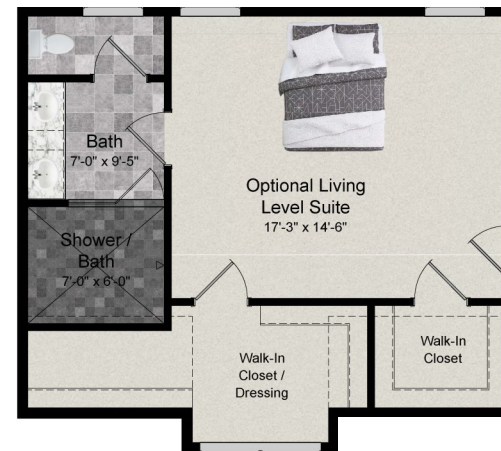
ADDITIONAL MASTER
BEDROOM OVER
25 X 25 GARAGE



Additional Master Suite
w/ Standard Bath



20 X 20 Garage



Additional Master Suite
w/ Deluxe Bath



Craftsman ELV



Arts & Crafts ELV



Modern Farmhouse ELV

Sales: Premier Group of Long & Foster Real Estate Inc

Sarah Gemmell

Direct (540) 550-6713

SarahGemmell.Homes@gmail.com

Rachel McGuire

Direct (443)677-7989

RachelMcGuire.homes@gmail.com

Office (301)945-9010

www.glenixhomes.com

Visit [GlenixHomes.com](https://www.glenixhomes.com) for more plans and information.

Call one of our sales agents to tour a home or set a pricing meeting.

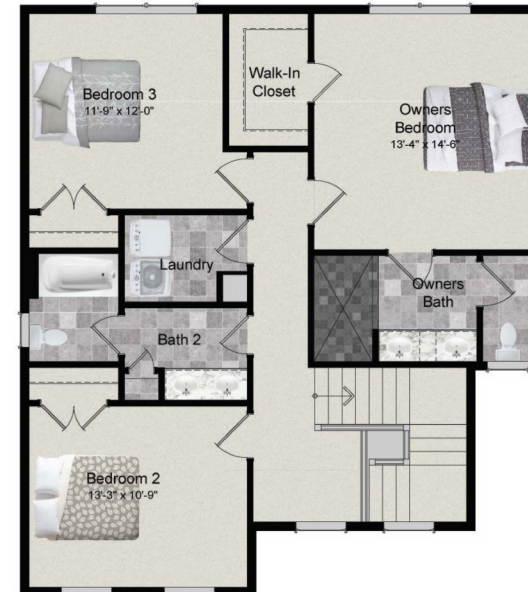


THE ASPEN

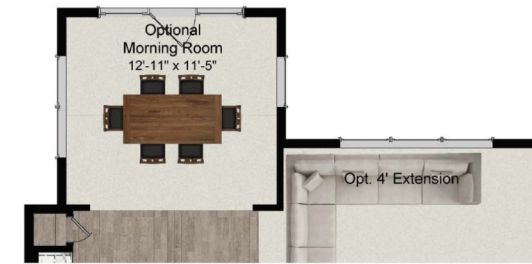
The Aspen offers a wide open floor plan with spacious rooms and lots of natural light as well as flexible spaces, allowing you to live the way you want. With an optional morning room and main level bed and bath, this home can adjust to almost any need.



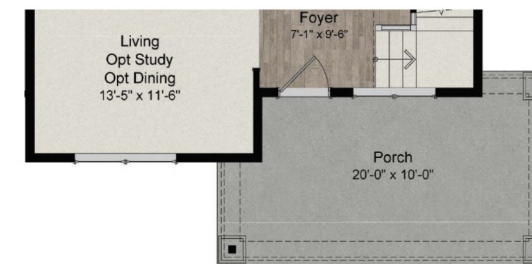
FIRST FLOOR



SECOND FLOOR



FIRST FLOOR OPTIONS



Arts & Crafts Elevation



LOWER LEVEL



SECOND FLOOR OPTIONS

Master Bedroom Extension w/ Family Room Extension

2,027 to 3,376 sqft

3 - 5 Bedrooms

- Owner's bath with spacious shower and ceramic tiling, separate water closet, and dual sinks.
- Open-corner foyer with natural light, 595-square-foot family room, and open kitchen with oversized island.

Sales: Premier Group of Long & Foster Real Estate Inc

Sarah Gemmell

Direct (540) 550-6713

SarahGemmell.Homes@gmail.com

Rachel McGuire

Direct (443) 677-7989

RachelMcGuire.homes@gmail.com

Office (301) 945-9010

www.glenixhomes.com

Visit GlenixHomes.com for more plans and information.

Call one of our sales agents to tour a home or set a pricing meeting.

